

# Alubase inc.

Shelter for Mini-Split

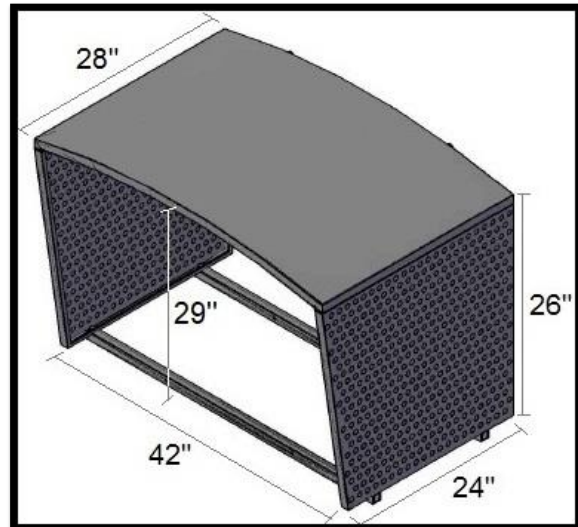


# Alubase<sub>inc.</sub>

## ITEM : ALU-S2642

Package in his own boxe.

Side panels folds for ease to carry and save on transport.



100% Aluminum

Powder coated color cream.

Side panel help to reduce the cold wind factor, help to keep unit in the shade.

Help to keep debris like leafs away from unit.

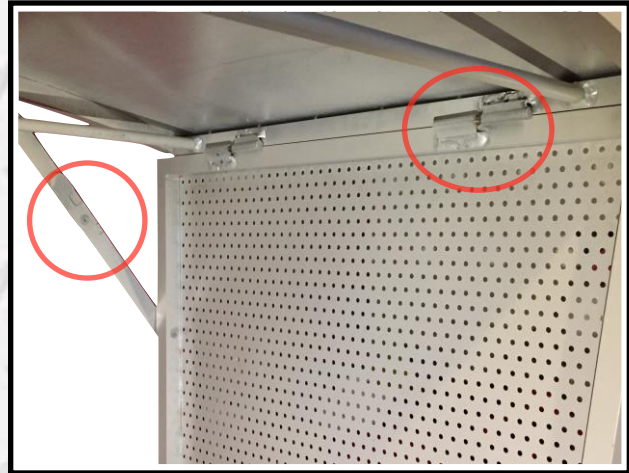
Can be installed on 24" wallmount bracket or floor stand.





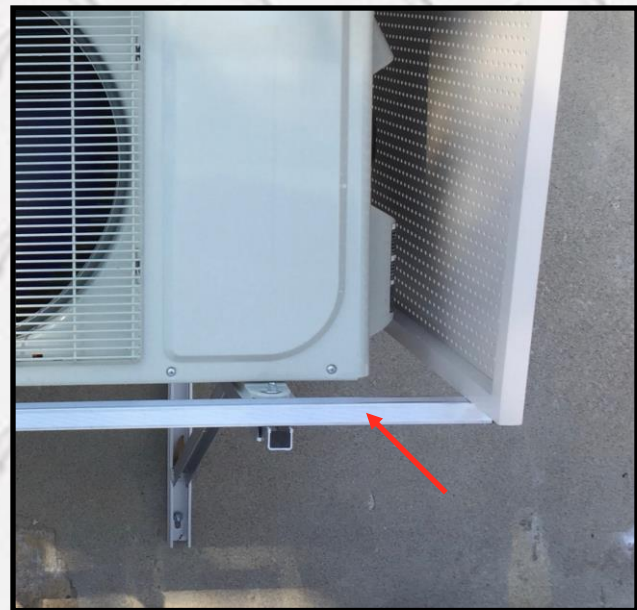
# Alubase inc.

Side panel are on hinges, you just need to unfold the side panel and lock them open.



Comes with instructions, the hardware, the two aluminium post to sit the mini-split shelter on.

Takes very little time to install.



2270 Antonio-Hérroux, Terrebonne, Québec. J6X 4T8  
Tel: (450)966-9264 Fax: (450) 966-6376

[info@alubase.ca](mailto:info@alubase.ca)

[www.alubase.ca](http://www.alubase.ca)